
MAX

S E R V I C E S

**HEAVY
LIFT
TEAM**

HEAVY LIFTING AND TRANSPORT SERVICES NATION WIDE



VITAL LINK.



CAN-DO
CAPABILITY



HEAVY LIFT TEAM

The Australian company with the people, the capability and the equipment.

MAX is a leading Heavy Lift and Transport company, centrally located in South Australia, servicing all industries nationwide. Our dedicated and specialised **Heavy Lift Team** have the experience to evaluate, plan and deliver all lifting projects no matter how large or small. Our highly motivated team will provide the same high level of service whether you require a one off single lift or a full turn key solution for your long-term project.

- + WIND & RENEWABLES
- + MINING & RESOURCES
- + HEAVY INDUSTRIAL
- + POWER & ENERGY
- + OIL & GAS
- + TRANSPORT & INFRASTRUCTURE

Our values

4



1. Safety

- Fostering a safety culture where we feel safe to identify and express concerns
- Promoting a safe environment both mentally and physically
- Taking responsibility for the safety of our co-workers in addition to ourselves



2. Teamwork

- Making decisions with a focus on what's best for the team, not for individual achievement
- Proactively offering assistance and support to co-workers and new team members
- Promoting teamwork by focusing on things that bring us together
- Acting as a positive role model for everyone on our team
- Placing organisational goals above personal and departmental objectives



3. Attitude

- Maintaining a positive outlook and striving to see the opportunity in all situations
- Open-minded and flexible with new ways of doing things
- Persisting to overcome challenges, setbacks and obstacles – CAN DO CAPABILITY
- Demonstrating composure in stressful situations and succeeding under pressure
- Taking ownership



4. Respect

- Listening attentively
- Communications are timely, concise, and respectful
- Maintaining a positive, encouraging and respectful attitude towards co-workers and clients
- Embracing and respecting colleagues job roles and accountabilities
- Demonstrating high levels of respect to MAX equipment and assets
- Consistently respecting our appearance, clothing and health



5. Integrity

- Understanding and promoting MAX Services Policies and Procedures
- Building and demonstrating high levels of trust and reliability within MAX Services and toward clients and external stakeholders
- Doing the right thing, regardless of the situation or external pressures
- Demonstrating responsibility and accountability of our actions and behaviours
- Practicing and encouraging open and honest communication

Our people, culture & safety

5

Our dedicated teams have the flexibility to change with your project requirements. We are focused on customer satisfaction and can draw on many years' of experience gained from working in all aspects of general crane hire and the heavy lift industry.

+ The MAX Services culture empowers our team to prioritise safety above all else

+ We are accustomed to the challenges of ensuring the safety and wellbeing of our team members whilst working in some of the most extreme environments Australia has to offer

+ Continuous development and up-skilling

+ Compliant with all national safety codes. Certified to ISO 45001 (Safety Management System) and ISO 9001 (Quality Management System)

+ Our commitment to safe work practices and continual improvement creates trust and confidence



MAX SERVICES HEAVY LIFT TEAM



Our equipment

Our Heavy Lift equipment is 100% owned, operated and maintained by MAX, and has been selected to service a wide range of industry applications across Australia. Supporting our Heavy Lift cranes, is an extensive fleet of transport options. This gives MAX the in-house capability to respond to even the most urgent requests.

- + All equipment serviced and supported by MAX OEM trained technicians compliant with relevant industry standards
- + Large range of specialist lifting equipment including large capacity slings, shackles, spreader bars, equalising plates and more, which can be included with the lifting service or available as stand-alone hire
- + The Heavy Lift Team can be supported on any project by our fleet of over 60 cranes ranging from 15t capacity to 250t capacity
- + The Heavy Lift Cranes are complemented by its transport division which provides all types of specialised transport using modern multi configuration trailers. Options include everything from tilt trays to modular platforms up to 200t capacity
- + Also available is an extensive range of access equipment, telehandlers and lighting towers



- 350t Crawler Crane
- 400t All Terrain Crane
- 500t All Terrain Crane
- 1200t All Terrain Crane
- Heavy Transport Equipment



Our capability

Our can-do-capability is what we live by. Founded on the MAX core values, our team is driven to provide you with the safest and most efficient solution. Our team of technical experts utilise the latest technology in lift planning to develop solutions from conception to final design.

- + Project delivery is managed by our dedicated and agile operations team who in conjunction with our highly skilled and trained workforce utilise the most advanced equipment available in the industry to meet your requirements
- + No matter how demanding the project, challenging the timeline or harsh the environment we have the team and resources behind us to deliver your project safely, on time and on budget – no matter the size
- + Amongst our team we have the technical experts, industry specific AutoCAD drafters, project managers, site supervisors and highly trained and experienced crane crews to bring it all together
- + Key team members have all spent their working careers, (beginning at the ground level) building experience in the lifting industry, bringing together decades of experience to provide the highest standard of support for your project





EQUIPMENT PROFILE

350 tonne

LR1350/1 CRAWLER CRANE

The LR1350/1 crawler crane features the very latest drive and control technology. Lightweight boom systems are designed for easy transport and low cost set-up while still providing outstanding lifting capacities. Various boom configurations optimise the available capacity at any required radius or hook height. The load capacities in all configurations can be significantly enhanced with the derrick boom and suspended ballast system.

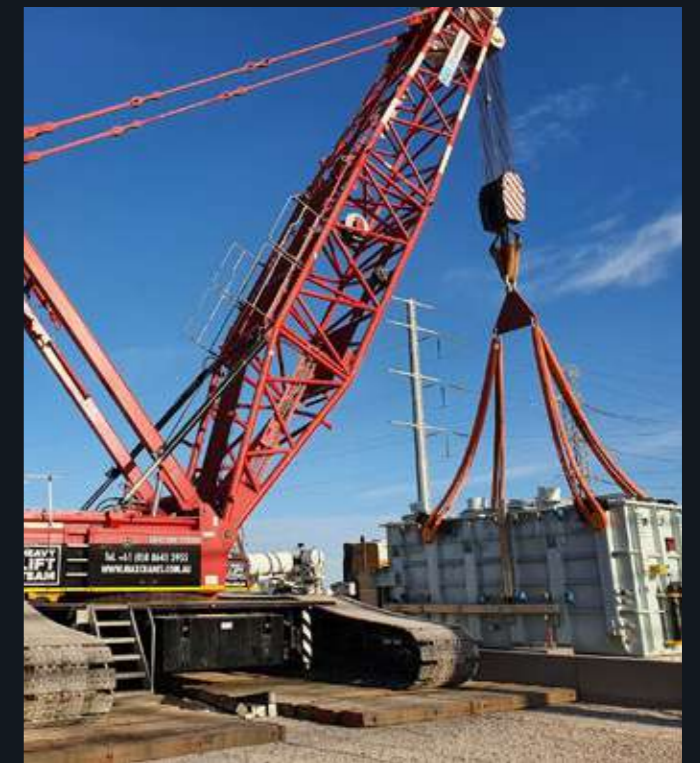
11

Asset benefits

- + Efficient and economical mobilisation
- + Compact footprint with High Load Capacities
- + Multiple Boom systems for optimum performance

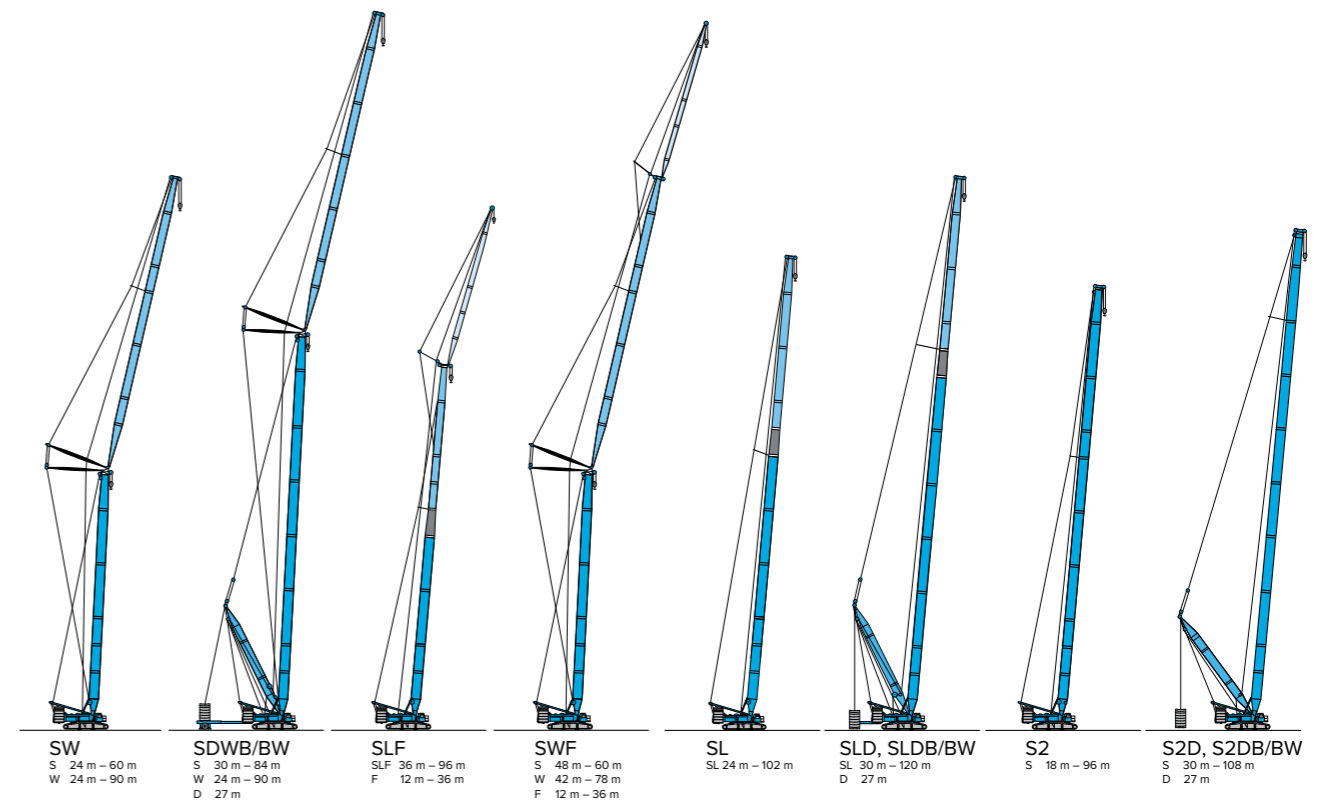
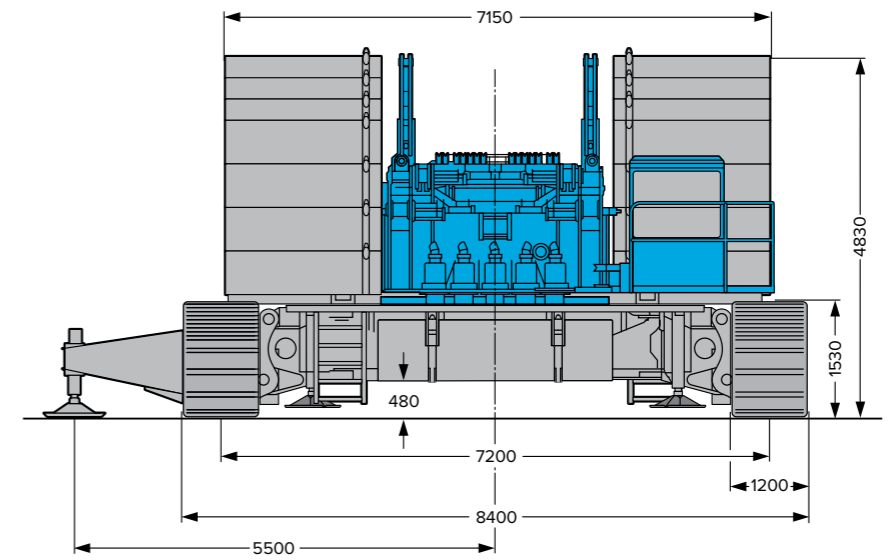
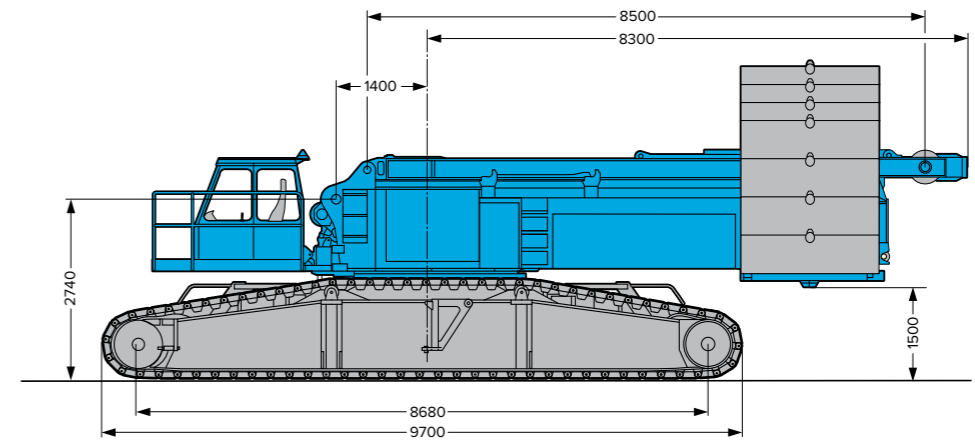
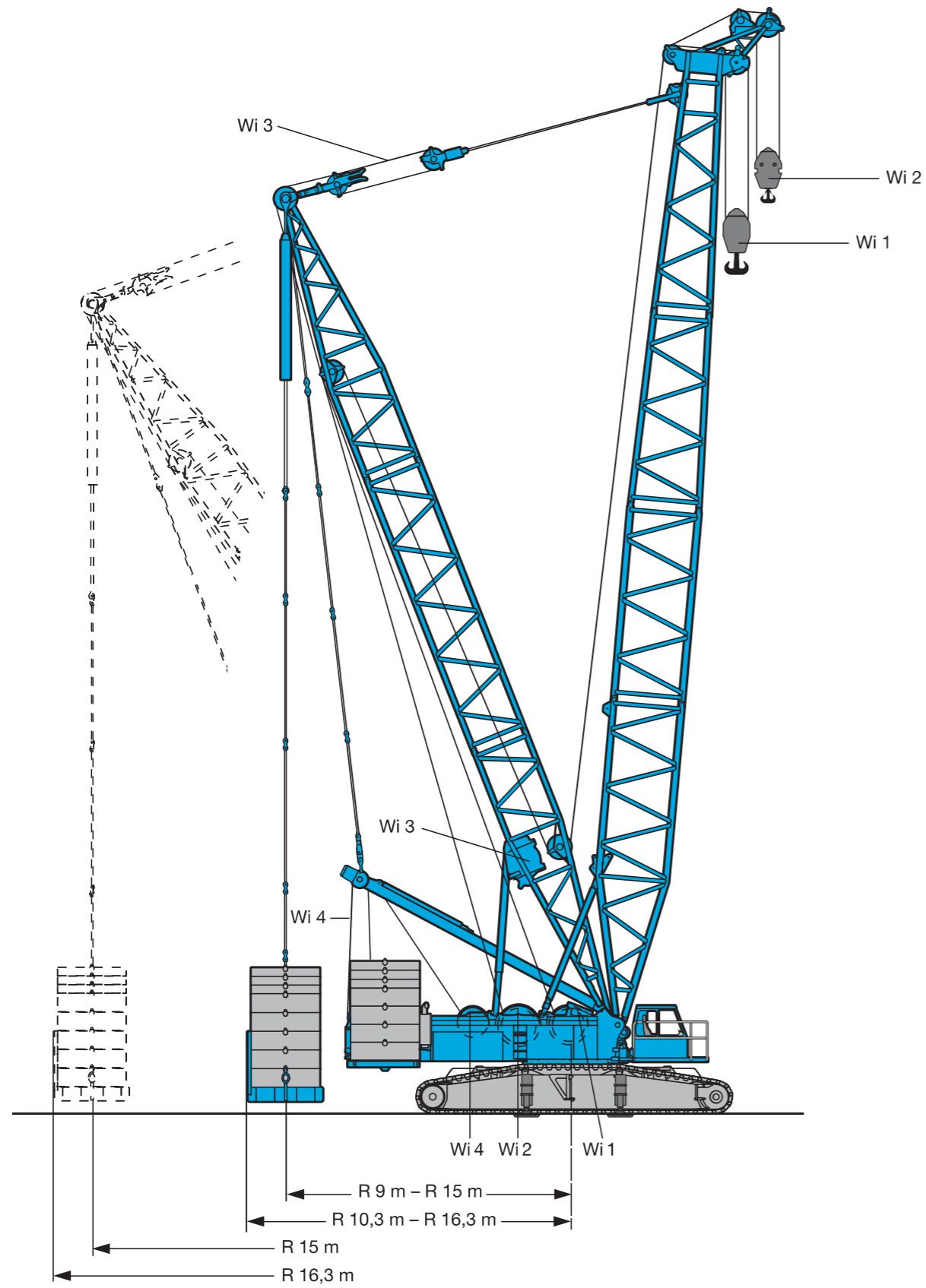
Quick stats

Maximum load capacity	350 t
Maximum hoist height	152 m
Maximum radius	110 m
S boom	84 m
SDB boom	108 m
SL boom	102 m
SLDB boom	120 m
Luffing fly	90 m
Derrick boom	27 m
Suspended ballast radius	9-15 m



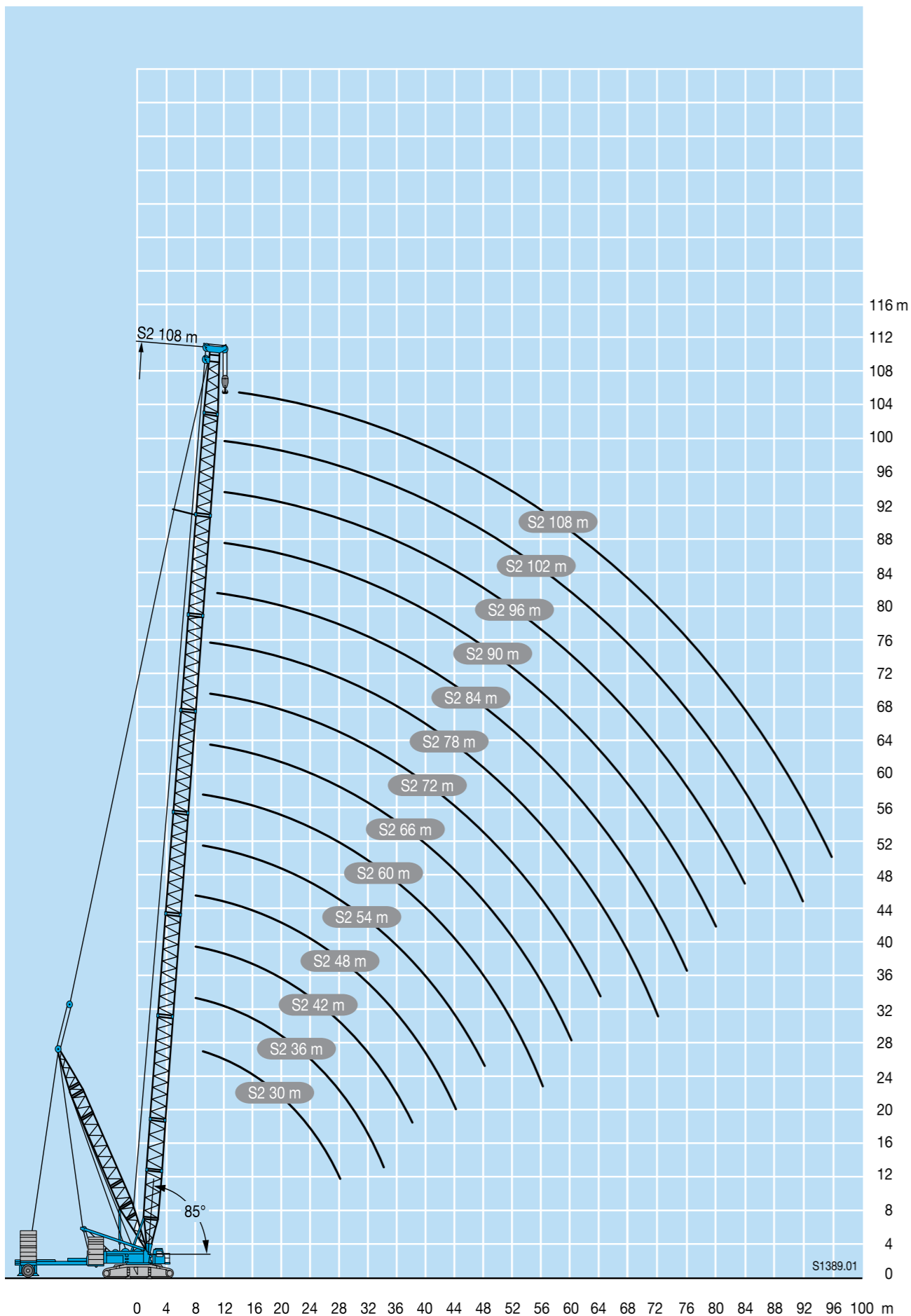
350 tonne

LR1350/1 CRAWLER CRANE



Lifting heights

S2DB/S2DBW



S2D

S2 30 - 108

m	S2 30 - 108														m
	30	36	42	48	54	60	66	72	78	84	90	96	102	108	
6	288														6
6,5	265	269													6,5
7	251	247	231												7
8	228	215	220	209	196										8
9	201	207	196	185	177	167	159								9
10	189	184	175	168	159	151	144	137	130						10
11	174	167	160	152	144	138	131	125	120	114	109				11
12	160	153	145	138	131	126	120	115	110	106	101	97	84,6		12
14	129	129	122	117	112	107	103	98,8	94,7	91,1	87,1	83,9	80,7	72,8	14
16	108	107	105	101	96,6	93,1	89,3	86	82,5	79,5	76,2	73,5	70,7	68,3	16
18	91,6	91	90,4	88,7	84,7	81,9	78,6	75,8	72,8	70,2	67,2	64,9	62,5	60,4	18
20	79,3	78,6	78	77,6	75,1	72,7	69,8	67,4	64,7	62,5	59,8	57,8	55,6	53,8	20
22	69,7	68,9	68,3	67,9	67,1	65,2	62,6	60,4	58	56	53,6	51,8	49,8	48,1	22
24	62	61,2	60,5	60,1	59,3	58,8	56,5	54,5	52,3	50,5	48,2	46,6	44,8	43,3	24
26	55,7	54,9	54,2	53,7	52,8	52,6	51,2	49,5	47,4	45,7	43,6	42,1	40,5	39,1	26
28	50,5	49,6	48,9	48,4	47,5	47,3	46,7	45,1	43,1	41,5	39,6	38,2	36,6	35,4	28
30		45,2	44,4	43,9	43	42,8	42,1	41,2	39,3	37,9	36,1	34,8	33,3	32,1	30
32		41,4	40,6	40	39,1	38,9	38,2	37,8	36	34,7	32,9	31,7	30,3	29,1	32
34		38,2	37,3	36,7	35,8	35,5	34,8	34,4	33,1	31,8	30,1	29	27,6	26,5	34
36		34,4	33,8	32,9	32,6	31,9	31,5	30,5	29,3	27,6	26,5	25,2	24,1		36
38			31,9	31,2	30,3	30	29,3	28,9	28,1	26,9	25,3	24,3	23	22	38
40				29	28	27,7	27	26,5	25,8	24,8	23,3	22,3	21	20,1	40
44				25,3	24,2	23,8	23,1	22,6	21,9	21,2	19,7	18,7	17,5	16,6	44
48					21,2	20,7	19,9	19,4	18,6	18	16,7	15,8	14,6	13,7	48
52						18,1	17,3	16,7	15,7	15,1	14,1	13,2	12,1	11,3	52
56						16	15	14,3	13,3	12,7	11,8	11,1	9,9	9,1	56
60							13,1	12,3	11,3	10,7	9,8	9,2	8,1	7,2	60
64								10,7	9,6	8,9	8	7,4	6,4	5,6	64
68									8,1	7,4	6,5	5,9	5	4,2	68
72									6,9	6,1	5,1	4,5	3,7		72
76										5	4	3,3			76
80											3				80

* raisable only with derrick ballast

TAB 173041 / 173042 / 173043
TAB 173046 / 173047 / 173048
TAB 173051 / 173052 / 173053

S2DB

S2 30 - 108

m	S2 30 - 108														m			
	30	36	42	48	54	60	66	72	78	84	90	96	102	108				
6	300														6			
6,5	300	300													6,5			
7	300	300	300												7			
8	300	300	300	300	283										8			
9	300	300	300	300	283	245	211								9			
10	300	300	300	300	281	243	211	182	156						10			
11	300	300	300	300	279	242	210	181	155	133	115				11			
12	300	300	300	300	277	241	209	180	155	132	114	97,7	84,8		12			
14	300	300	298	294	273	238	207	179	153	130	112	97,2	84,1	73,2	14			
16	267	265	264	262	257	233	203	177	151	129	111	96,8	83,5	72,6	16			
18	237	235	234	233	231	226	200	174	149	128	110	96,4	83	72	18			
20	213	211	210	209	207	207	196	171	147	127	109	95,8	82,4	71,5	20			
22	192	192	190	189	188	187	185	167	146	126	109	95,3	81,9	70,9	22			
24	167	175	174	173	171	171	171	165	144	125	108	94,7	81,4	70,5	24			
26	149	162	161	159	158	157	157	155	142	124	107	94	80,8	69,9	26			
28	130	149	148	147	146	146	145	144	140	123	106	93,4	80,3	69,3	28			
30		134	138	137	135	135	134	134	132	120	105	92,8	79,9	68,7	30			
32		119	129	127	126	126	125	125	124	118	105	92,3	79,4	68,2	32			
34			121	119	118	118	117	116	115	114	102	91,4	78,8	67,7	34			
36			111	112	111	111	110	109	108	108	101	90,4	77,9	67,2	36			
38				99,6	106	105	104	103	103	102	102	99,1	88,8	76,9	66,8	38		
40					99,8	99	98,3	97,8	97,1	96,2	95,8	94,8	85,5	76,4	66,4	40		
44						88,9	88,2	87,5	87,1	86,1	85,7	85	82,8	73,8	65,3	44		
48							79,8	79,2	78,7	77,6	77,3	76,5	75,9	71,4	63,6	48		
52								73	72	71,6	70,5	70,1	69,4	68,8	67,4	61,2	52	
56									63,5	66,1	65,6	64,5	64	63,3	62,7	61,8	56	
60										61	60,2	59	58,5	57,7	57,5	56,6	55,7	60
64												54,3	53,9	53,1	52,7	51,9	51,3	64
68													50,5	49,8	49	48,4	47,7	68
72														46,6	45,9	45	44,8	72
76															42,8	41,9	41,5	76
80																39	38,4	80
84																	35,8	84
88																	33,3	88
92																	30,2	92
96																		96

TAB 173062 / 173064 / 173066 / 173068



EQUIPMENT PROFILE

400 tonne

LTM1400-7.1 ALL TERRAIN CRANE

The LTM1400-7.1 is the most powerful 400t crane available. Offering unmatched capacities in its class with multiple boom configurations and the ability for partial self-assembly, makes this machine a simple choice for a wide range of applications. All wheel steering on 7 axles, together with variable radius counterweight means the 400t can access the tightest of job sites. Main boom and luffing fly load capacities are significantly enhanced with the self assembling Y-Guy system.

17

Asset benefits

- + All terrain capable
- + All wheel steering
- + Self assembling Y-Guys (superlift)

Quick stats

Maximum load capacity	400 t
Maximum hoist height	130 m
Maximum radius	100 m
Telescopic boom	60 m
Fixed fly	56 m
Luffing fly	84 m

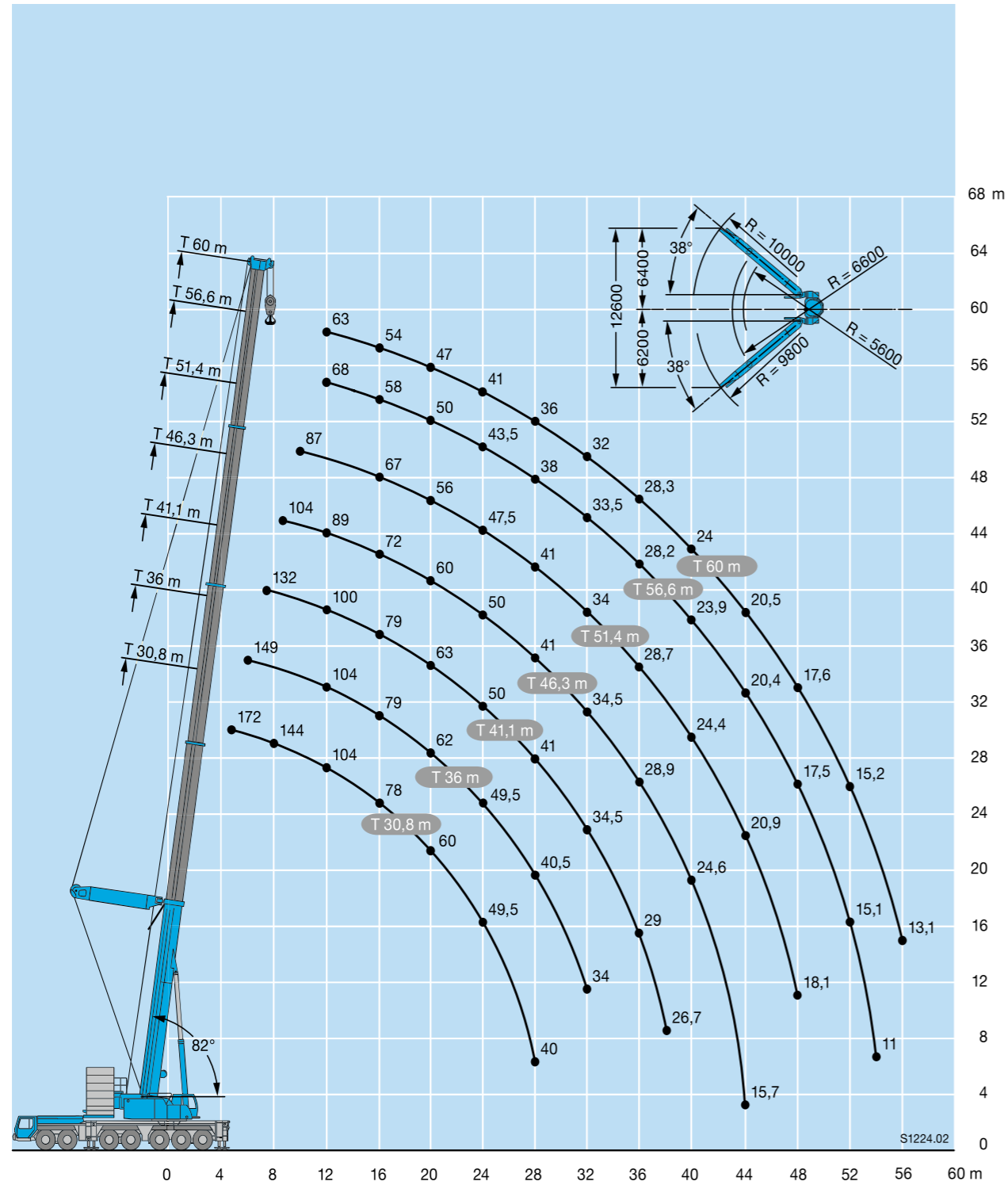


400 tonne

LTM1400-7.1 ALL TERRAIN CRANE

Lifting heights

TY



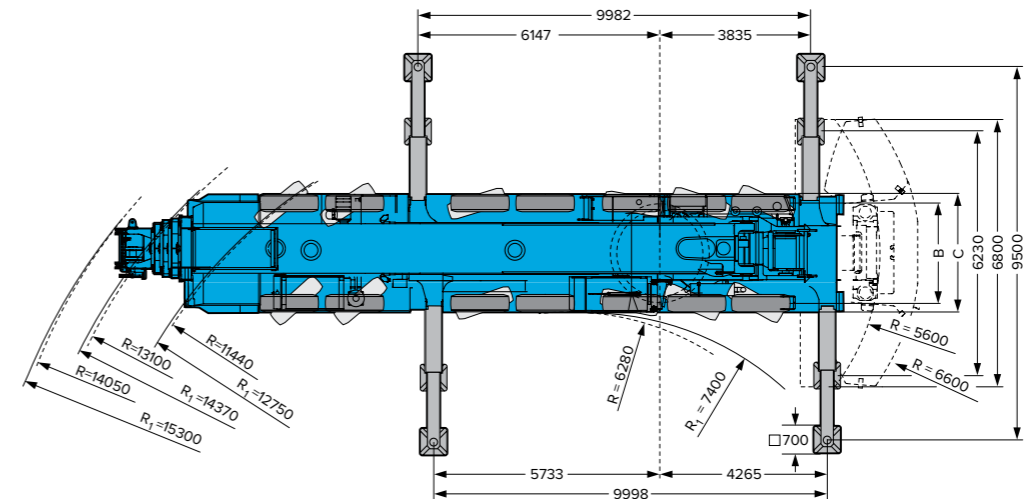
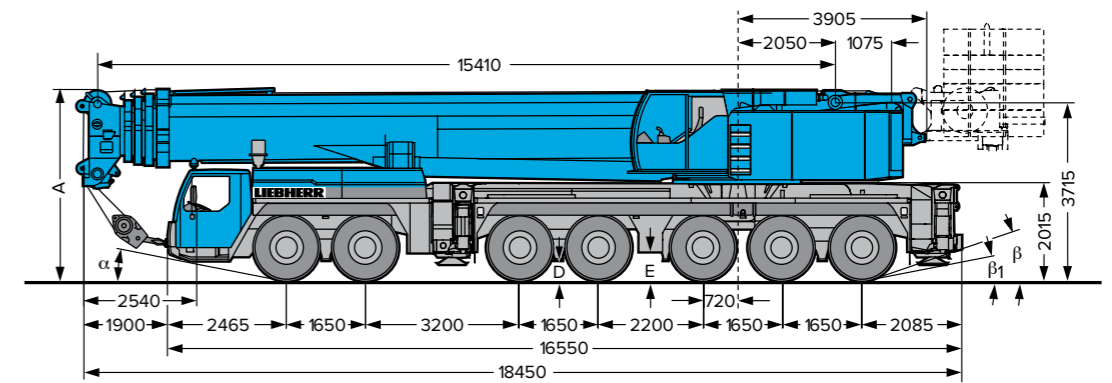
Lifting capacities on guyed telescopic boom



m	30,8 m	36 m	41,1 m	46,3 m	51,4 m	56,6 m	60 m	m
5	172							5
6	166	149						6
7	153	143	132					7
8	138	136	124					8
9	126	105	125	117				9
10	115	122	115	104	111			10
12	97	104	98	104	96	88		12
14	83	90	84	91	84	90	79	14
16	71	78	73	79	74	79	72	16
18	64	68	64	70	65	70	64	18
20	57	60	57	62	57	63	57	20
22	50	55	50	55	51	56	51	22
24	44,5	49,5	45	49,5	45,5	50	45,5	24
26	40	44,5	40,5	45	41	45,5	41	26
28	36,5	40	36,5	40,5	37	41	37	28
30			33,5	37	33,5	37,5	33,5	30
32			30,5	34	30,5	34,5	30,5	32
34					31,5	28	31,5	34
36					25,7	29	25,7	36
38					23,7	26,7	23,6	38
40							21,7	40
42							20	42
44							15,7	44
46								46
48								48
50								50
52								52
54								54
56								56

* Ballast retracted

TAB 146037 / 146036





EQUIPMENT PROFILE

500 tonne

AC500-2 ALL TERRAIN CRANE

The Terex AC500-2 All Terrain Crane features proven technology to deliver impressive lifting charts across all heights and radiuses. SSL-Technology (Sideways Superlift) is also available for an additional increase in lifting capacity across all configurations. Boasting the shortest carrier length of all 500t class cranes, access to difficult rigging locations is made easy. Star-type outriggers offer unmatched strength and rigidity, and together with the unique ovaloid boom design, this crane delivers outstanding capacities without the need for supplementary systems.

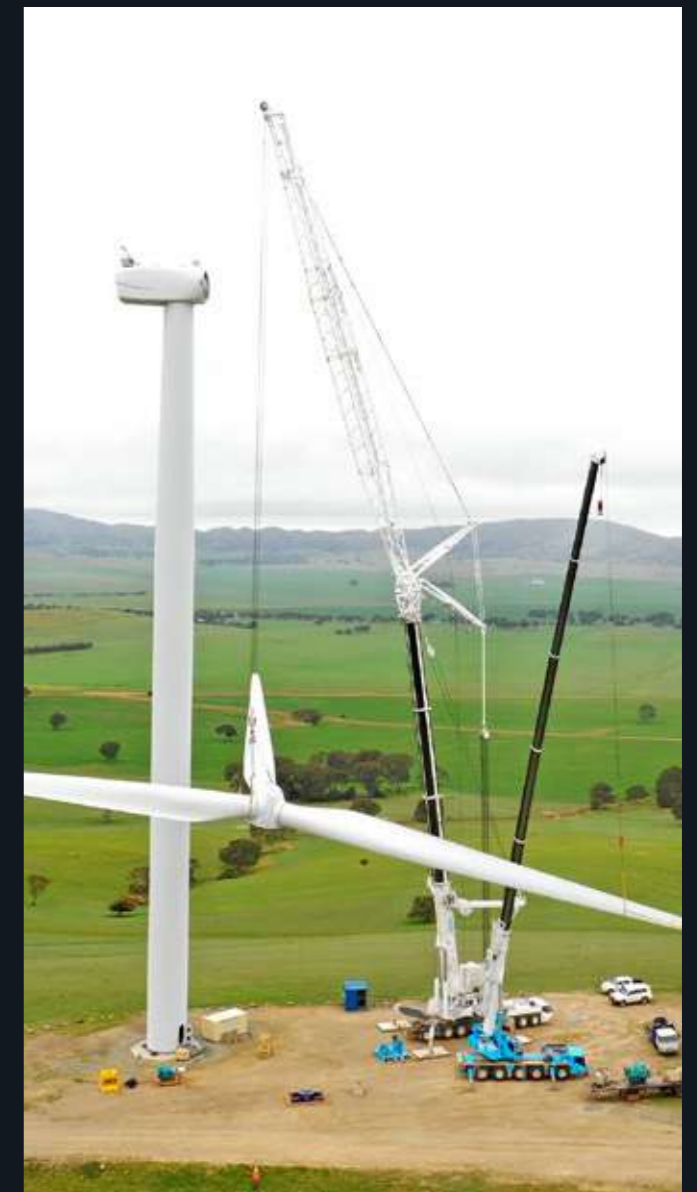
23

Asset benefits

- + All terrain capable
- + All wheel steering
- + Sideways Superlift system

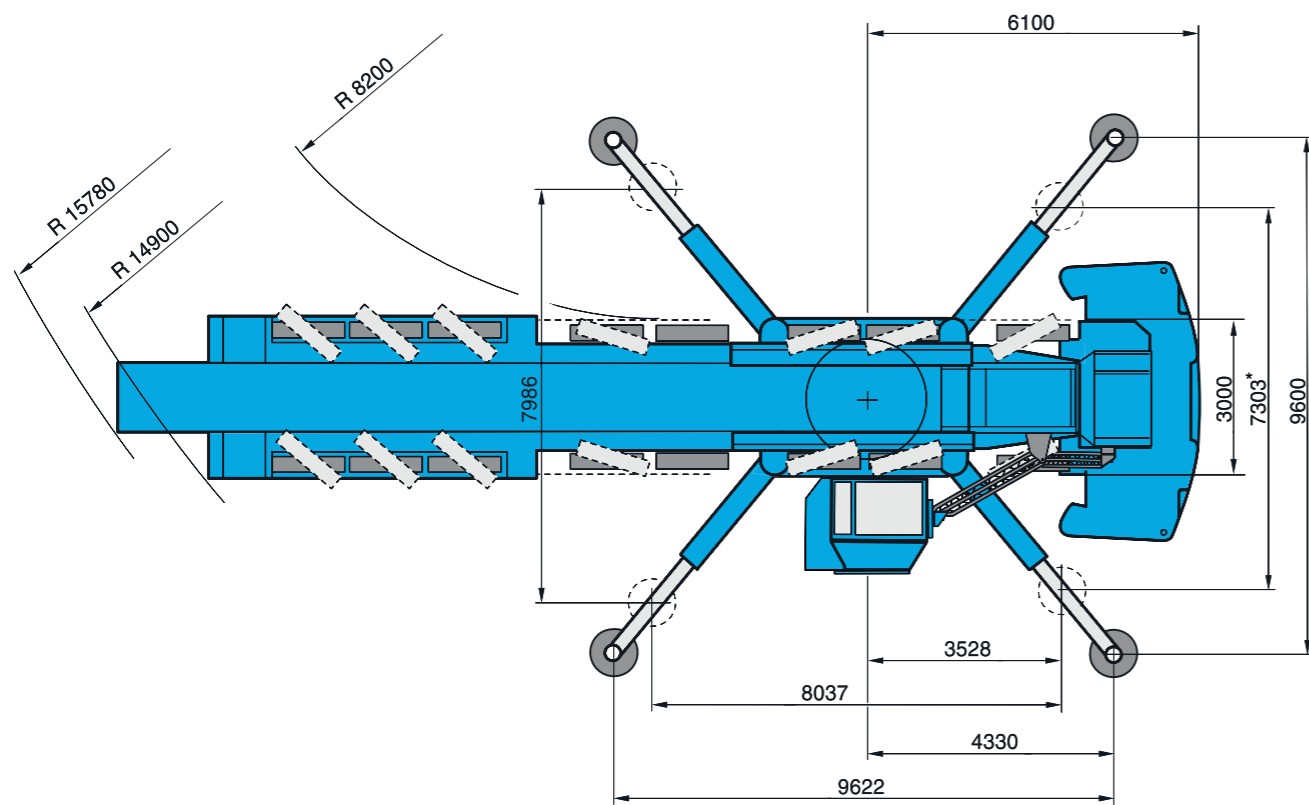
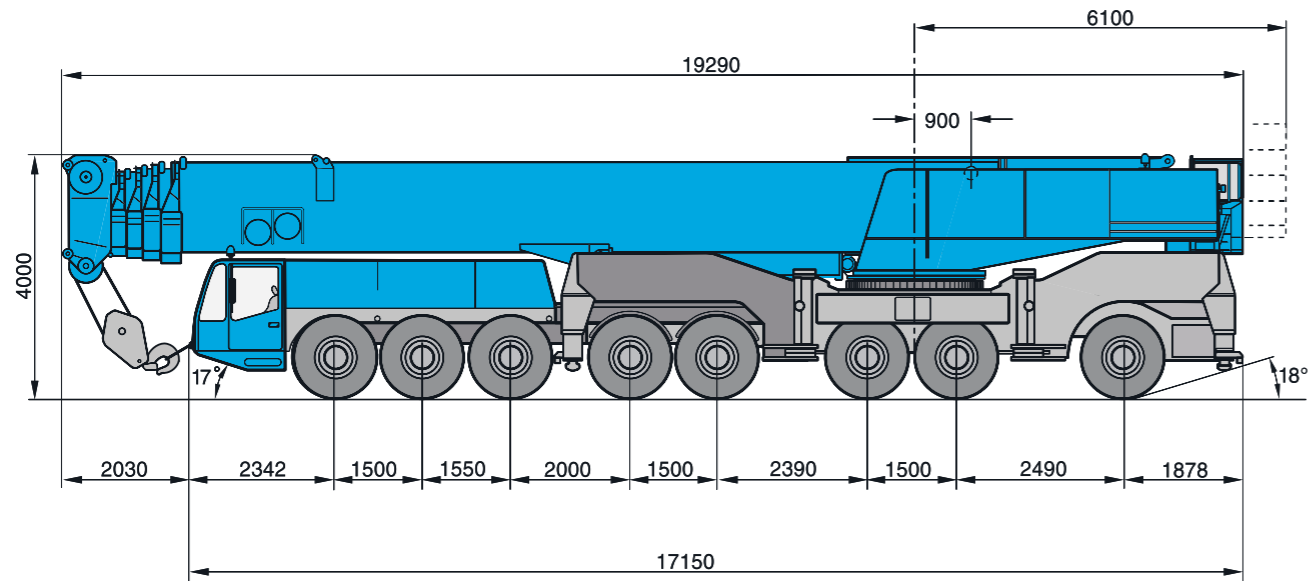
Quick stats

Maximum load capacity	500 t
Maximum hoist height	143 m
Maximum radius	110 m
Telescopic boom	56 m
Fixed fly	62 m
Luffing fly	90 m



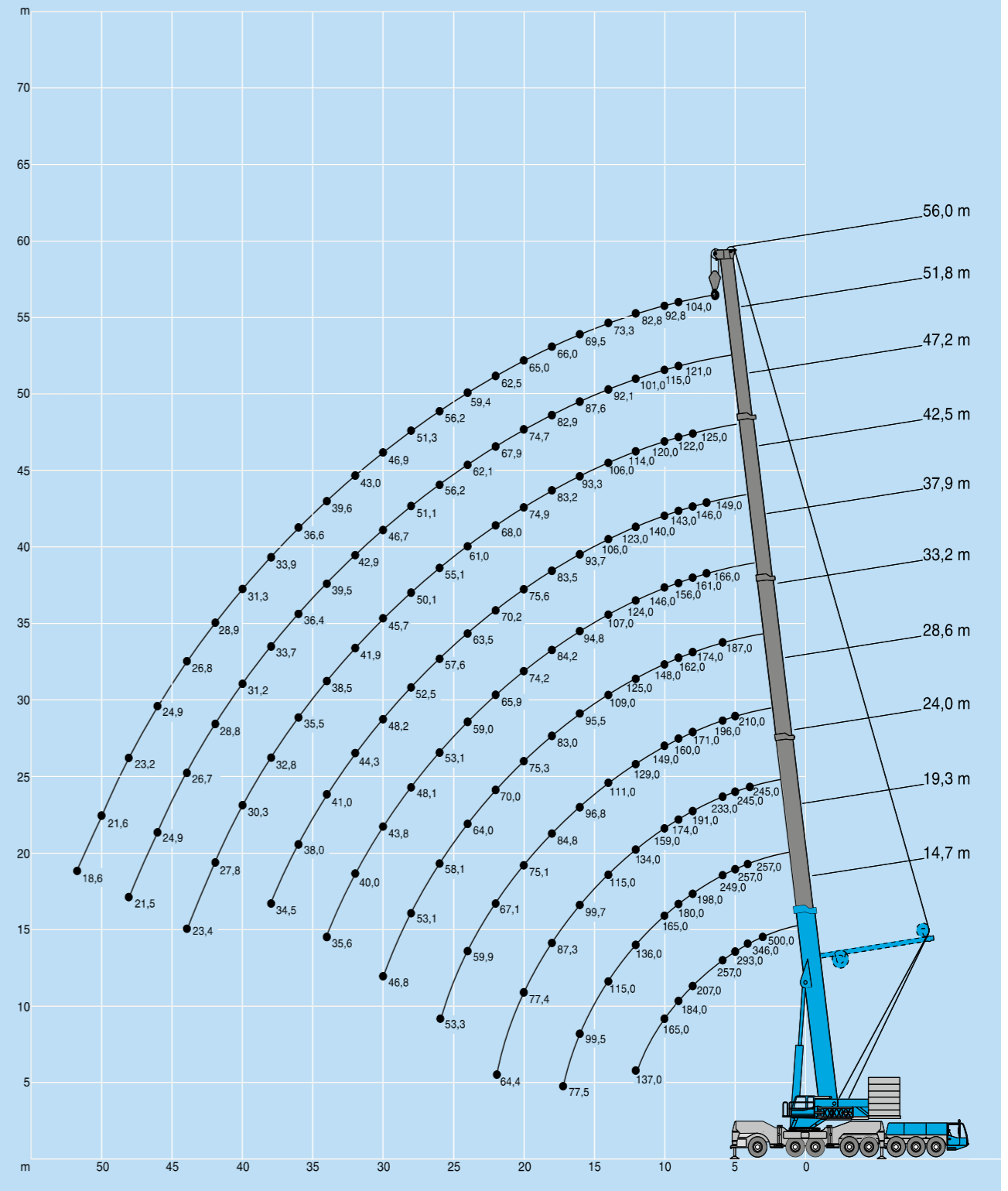
500 tonne

AC500-2.B2.200808 ALL TERRAIN CRANE



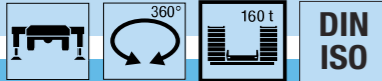
Working ranges

HA/HASSL



Lifting capacities

HA



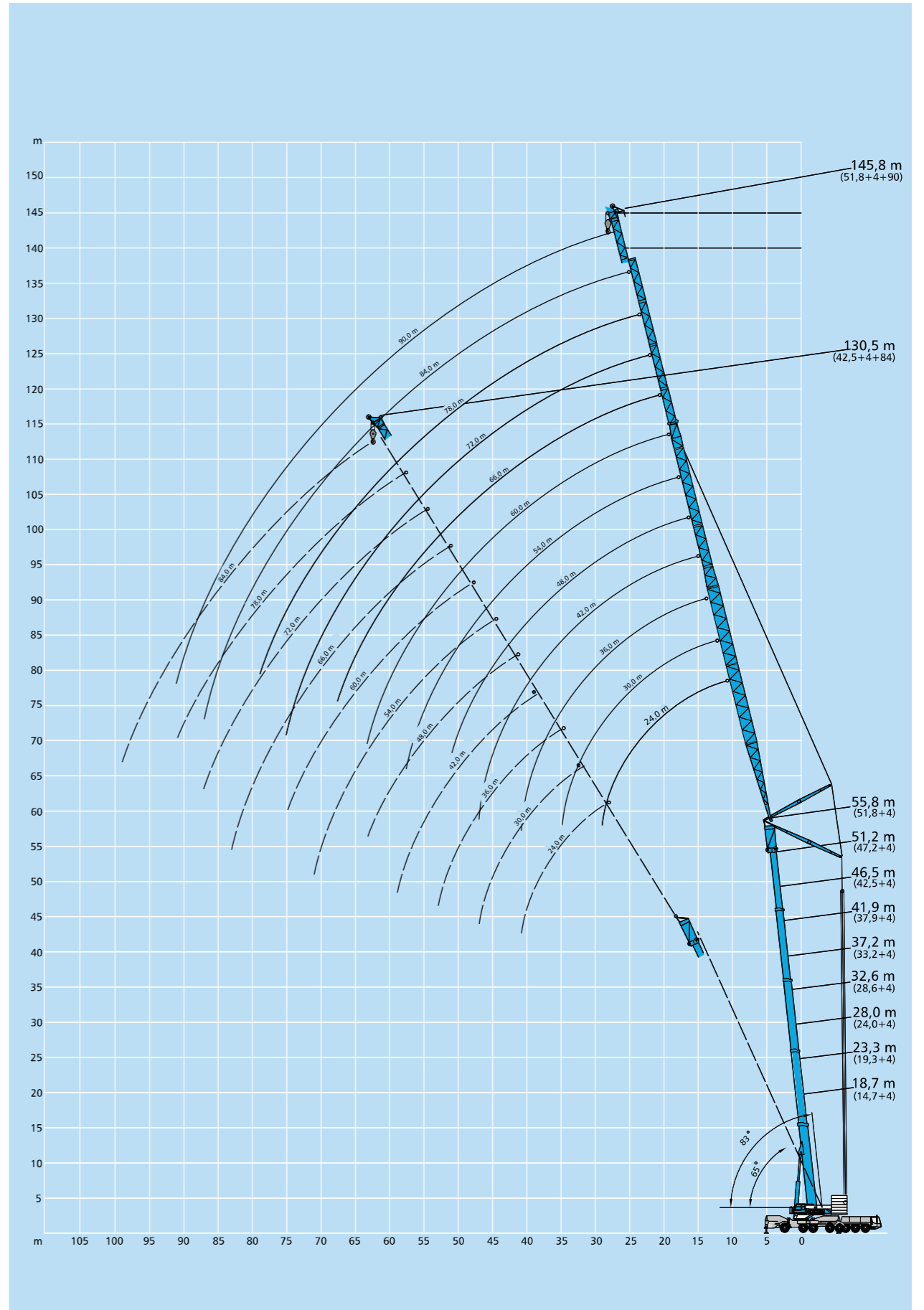
Radius		Main boom													Radius
m	14,7 ¹⁾	14,7	19,3 ¹⁾	19,3	24,0 ¹⁾	24,0	28,6	33,2	37,9	42,5	47,2	51,8	56,0	m	
m	t	t	t	t	t	t	t	t	t	t	t	t	t	m	
3	500,0*	257,0	-	-	-	-	-	-	-	-	-	-	-	3	
3,5	381,0*	257,0	257,0	257,0	-	-	-	-	-	-	-	-	-	3,5	
4	346,0*	257,0	257,0	257,0	245,0	245,0	-	-	-	-	-	-	-	4	
4,5	317,0*	257,0	257,0	257,0	245,0	245,0	-	-	-	-	-	-	-	4,5	
5	293,0*	253,0	257,0	252,0	245,0	245,0	210,0	-	-	-	-	-	-	5	
6	257,0	224,0	249,0	224,0	233,0	224,0	196,0	166,0	-	-	-	-	-	6	
7	231,0	201,0	221,0	201,0	211,0	201,0	184,0	156,0	142,0	-	-	-	-	7	
8	207,0	182,0	198,0	182,0	191,0	182,0	171,0	146,0	134,0	117,0	-	-	-	8	
9	184,0	166,0	180,0	166,0	174,0	166,0	160,0	138,0	125,0	110,0	95,3	82,9	-	9	
10	165,0	153,0	165,0	153,0	159,0	152,0	149,0	130,0	118,0	104,0	89,9	78,6	66,8	10	
12	137,0	131,0	136,0	131,0	134,0	130,0	129,0	115,0	103,0	93,5	80,4	71,0	61,2	12	
14	-	-	115,0	112,0	115,0	111,0	111,0	102,0	91,1	84,1	72,5	64,4	56,0	14	
16	-	-	99,5	97,2	99,7	95,9	96,8	90,5	80,9	75,8	65,9	58,7	51,2	16	
18	-	-	75,9	77,5	87,3	83,9	84,8	80,5	72,8	68,5	60,2	53,7	46,9	18	
20	-	-	-	-	77,4	74,2	75,1	72,5	66,1	62,1	55,1	49,4	43,1	20	
22	-	-	-	-	64,3	64,4	67,1	66,2	60,2	56,5	50,7	45,5	39,7	22	
24	-	-	-	-	-	-	59,9	61,0	55,0	51,6	46,7	42,1	36,7	24	
26	-	-	-	-	-	-	53,3	54,6	50,3	47,3	43,2	39,1	34,1	26	
28	-	-	-	-	-	-	49,1	46,2	43,6	40,2	36,4	31,8	28	28	
30	-	-	-	-	-	-	-	44,4	42,5	40,4	37,6	34,0	29,8	30	
32	-	-	-	-	-	-	-	-	39,4	37,8	35,4	32,0	28,1	32	
34	-	-	-	-	-	-	-	-	36,0	35,2	33,3	30,0	26,3	34	
36	-	-	-	-	-	-	-	-	-	32,9	31,6	28,5	24,8	36	
38	-	-	-	-	-	-	-	-	-	30,3	29,8	26,9	23,3	38	
40	-	-	-	-	-	-	-	-	-	28,0	28,2	25,6	22,1	40	
42	-	-	-	-	-	-	-	-	-	-	26,3	24,3	20,8	42	
44	-	-	-	-	-	-	-	-	-	-	24,5	23,1	19,8	44	
46	-	-	-	-	-	-	-	-	-	-	-	22,0	18,7	46	
48	-	-	-	-	-	-	-	-	-	-	-	20,9	17,8	48	
50	-	-	-	-	-	-	-	-	-	-	-	-	17,0	50	
52	-	-	-	-	-	-	-	-	-	-	-	-	16,2	52	

¹⁾ 180 t counterweight, additional central outriggers, double hook block required

* over rear

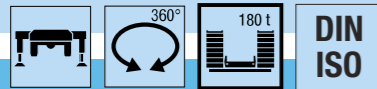
Working ranges luffing fly jib main boom 83° to 65°

HA/HASSL



Lifting capacities

HASSL 0°



Radius		Main boom						Radius
m	33,2	37,9	42,5	47,2	51,8	56,0	m	
m	t	t	t	t	t	t	m	
6	187,0	-	-	-	-	-	6	
7	181,0	166,0	149,0	-	-	-	7	
8	174,0	161,0	146,0	125,0	-	-	8	
9	162,0	156,0	143,0	122,0	121,0*	-	9	
10	148,0	146,0	140,0	120,0	115,0*	104,0*	10	
12	125,0	124,0	123,0	114,0	101,0*	92,8*	12	
14	109,0	107,0	106,0	106,0	92,1	82,8*	14	
16	95,5	94,8	93,7	93,3	87,6	73,3	16	
18	83,0	84,2	83,5	83,2	82,9	69,5	18	
20	75,3	74,2	75,6	74,9	74,7	66,0	20	
22	70,0	65,9	70,2	68,0	67,9	62,6	22	
24	64,0	59,0	63,5	61,0	62,1	59,4	24	
26	58,1	53,1	57,6	55,1	56,2	56,2	26	
28	53,1	48,1	52,5	50,1	51,1	51,3	28	
30	46,8	43,8	48,2	45,7	46,7	46,9	30	
32	-	40,0	44,3	41,9	42,9	43,0	32	
34	-	35,6	41,0	38,5	39,5	39,6	34	
36	-	-	38,0	35,5	36,4	36,6	36	
38	-	-	34,5	32,8	33,7	33,9	38	
40	-	-	-	30,3	31,2	31,3	40	
42	-	-	-	27,8	28,8	28,9	42	
44	-	-	-	23,4	26,7	26,8	44	
46	-	-	-	-	24,9	24,9	46	
48	-	-	-	-	21,5	23,2	48	
50	-	-	-	-	-	21,6	50	
52	-	-	-	-	-	18,6	52	
54	-	-	-	-	-	-	54	

* SSL 30°

Lifting capacities

WIHI
HA 83° to 65°



14,7 m + 4 m

Main boom + adapter

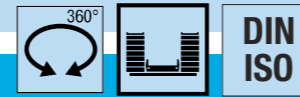
Radius m	Fly jib																		Radius m
	24 m			30 m			36 m			42 m			48 m			54 m			
	83°	73°	65°	83°	73°	65°	83°	73°	65°	83°	73°	65°	83°	73°	65°	83°	73°	65°	
13	121,0	-	-	104,0	-	-	-	-	-	-	-	-	-	-	-	-	-	-	13
14	117,0	-	-	102,0	-	-	-	-	-	-	-	-	-	-	-	-	-	-	14
16	107,0	-	-	98,0	-	-	85,5	-	-	68,7	-	-	-	-	-	-	-	-	16
18	96,8	-	-	93,5	-	-	84,0	-	-	68,7	-	-	54,4	-	-	-	-	-	18
20	87,0	-	-	86,5	-	-	82,5	-	-	68,7	-	-	54,4	-	-	49,0	-	-	20
22	78,8	75,8	-	78,4	75,2	-	77,6	-	-	68,7	-	-	54,4	-	-	49,0	-	-	22
24	72,0	69,2	-	71,5	68,7	-	70,7	67,8	-	67,7	-	-	54,4	-	-	49,0	-	-	24
26	54,0	63,6	61,6	65,7	63,1	-	65,0	62,2	-	64,2	-	-	54,2	-	-	49,0	-	-	26
28	-	58,8	57,0	60,8	58,3	56,4	60,0	57,4	-	59,2	56,6	-	52,1	-	-	49,0	-	-	28
30	-	-	53,0	53,0	54,1	52,4	55,7	53,3	-	54,9	52,5	-	50,0	51,4	-	48,5	-	-	30
32	-	-	-	50,5	48,8	47,9	51,9	49,6	47,9	51,1	48,8	-	47,9	49,4	-	47,7	47,4	-	32
34	-	-	-	47,3	45,7	44,8	45,4	46,4	44,8	47,8	45,6	-	45,8	46,1	-	46,9	45,4	-	34
36	-	-	-	-	43,0	42,0	37,7	43,6	42,0	44,8	42,7	41,2	43,5	43,3	-	44,7	42,5	-	36
38	-	-	-	-	-	39,6	41,0	39,6	41,2	40,2	38,7	41,3	40,7	39,2	42,0	40,0	-	-	38
40	-	-	-	-	-	37,3	38,8	37,3	35,7	37,9	36,5	39,0	38,4	36,9	39,6	37,7	-	-	40
42	-	-	-	-	-	35,3	29,9	35,8	34,4	36,7	36,3	34,9	37,4	35,6	34,2	42	-	-	42
44	-	-	-	-	-	-	-	33,9	32,6	33,9	34,4	33,1	35,4	33,7	32,3	44	-	-	44
46	-	-	-	-	-	-	-	32,1	30,9	29,7	32,6	31,4	33,6	31,9	30,6	46	-	-	46
48	-	-	-	-	-	-	-	29,3	25,1	30,8	29,7	31,1	30,3	29,1	48	-	-	48	
50	-	-	-	-	-	-	-	29,3	28,2	27,7	28,7	27,6	27,6	27,6	50	-	-	50	
54	-	-	-	-	-	-	-	-	25,5	20,6	26,0	24,9	24,9	24,9	54	-	-	54	
58	-	-	-	-	-	-	-	-	-	-	-	-	-	22,7	58	-	-	58	
62	-	-	-	-	-	-	-	-	-	-	-	-	-	-	62	-	-	62	

m	60 m			66 m			72 m			78 m			84 m			90 m			m
	t	t	t	t	t	t	t	t	t	t	t	t	t	t	t	t	t	t	
22	42,0	-	-	-	-	-	-	-	-	-	-	-	-	-	-	-	-	-	22
24	42,0	-	-	33,6	-	-	28,5	-	-	-	-	-	-	-	-	-	-	-	24
26	42,0	-	-	33,4	-	-	28,4	-	-	23,8	-	-	-	-	-	-	-	-	26
28	42,0	-	-	33,2	-	-	28,3	-	-	23,5	-	-	18,9	-	-	-	-	-	28
30	42,0	-	-	32,9	-	-	28,1	-	-	23,3	-	-	18,7	-	-	15,5	-	-	30
32	41,6	-	-	32,7	-	-	28,0	-	-	23,1	-	-	18,4	-	-	15,2	-	-	32
34	41,2	-	-	32,5	-	-	27,9	-	-	22,9	-	-	18,1	-	-	15,0	-	-	34
36	40,6	38,5	-	32,2	-	-	27,7	-	-	22,6	-	-	17,8	-	-	14,7	-	-	36
38	40,1	38,5	-	31,8	31,0	-	27,6	-	-	22,4	-	-	17,6	-	-	14,4	-	-	38
40	39,3	37,3	-	31,5	30,8	-	27,3	-	-	22,1	-	-	17,3	-	-	14,2	-	-	40
42	37,1	35,2	-	31,2	30,6	-	27,0	27,8	-	21,8	-	-	17,0	-	-	13,9	-	-	42
44	35,1	33,3	-	30,9	30,5	-	26,8	27,5	-	21,5	22,3	-	16,7	-	-	13,6	-	-	44
46	33,3	31,6	30,3	30,5	30,3	-	26,5	27,2	-	21,1	22,0	-	16,4	17,2	-	13,4	-	-	46
48	31,6	30,0	28,8	29,8	29,2	27,9	26,3	26,9	-	20,8	21,7	-	16,1	16,8	-	13,1	-	-	48
50	30,0	28,5	27,3	29,0	27,7	26,5	26,0	26,6	-	20,4	21,4	-	15,7	16,5	-	12,8	13,4	-	50
54	25,9	25,7	24,6	26,4	25,0	23,9	25,2	24,3	23,1	19,7	20,7	-	15,1	15,7	-	12,3	12,8	-	54
58	20,4	23,4	22,4	23,4	22,7	21,7	23,4	22,0	21,0	19,0	20,1	20,2	14,5	14,9	-	11,8	12,3	-	58
62	-	21,4	20,4	19,0	20,6	19,7	21,0	20,0	19,0	18,2	19,5	18,9	13,9	14,2	14,7	11,3	11,7	12,2	62
66	-	-	18,8	14,0	18,9	18,0	17,3	18,2	17,3	17,4	18,1	17,2	13,3	13,7	14,1	10,9	11,2	11,7	66
70	-	-	-	-	16,5	13,4	16,7	15,9	16,1	16,6	15,7	12,8	13,2	13,5	10,5	10,8	11,2	70	
74	-	-	-	-	-	-	15,4	14,6	13,1	15,2	14,4	12,3	12,7	13,0	10,0	10,4	10,8	74	
78	-	-	-	-	-	-	-	-	-	14,0	13,2	11,9	12,3	12,5	9,6	9,9	10,3	78	
82	-	-	-	-	-	-	-	-	-	-	12,1	9,5	12,0	12,0	9,3	9,6	9,9	82	
86	-	-	-	-	-	-	-	-	-	-	-	11,3	11,0	8,9	9,3	9,6	86		
90	-	-	-	-	-	-	-	-	-	-	-	-	-	9,1	9,3	9,6	90		
94	-	-	-	-	-	-	-	-	-	-	-	-	-	-	8,9	9,4	9,8	94	
98	-	-	-	-	-	-	-	-	-	-	-	-	-	-	-	-	-	98	

Counterweight 60 t 80 t 100 t 120 t 140 t 160 t 180 t
 Max. capacities with minimum counterweight
 Further counterweight configurations on request

Lifting capacities

WIHSSL 30°/60°
HA 83° to 65°



51,8 m + 4 m

Main boom + adapter

Radius m	Fly jib																		Radius m
	30 m			36 m			42 m			48 m			54 m						
	83°	73°	65°	83°	73°	65°	83°	73°	65°	83°	73°	65°	83°	73°	65°				
20	50,1	-	-	-	-	-	-	-	-	-	-	-	-	-	-	-	-	20	
22	48,3	-	-	-	-	-	-	-	-	-	-	-	-	-	-	-	-	22	
24	46,5	-	-	42,1*	-	-	-	-	-	-	-	-	-	-	-	-	-	24	
26	45,0	-	-	39,2*	-	-	38,0*	-	-	-	-	-	-	-	-	-	-	26	
28	43,6	-	-	37,9	-	-	35,5*	-	-	35,1*	-	-	32,0*	-	-	-	-	28	
30	42,2	-	-	36,8	-	-	33,1*	-	-	33,2*	-	-	30,6*	-	-	-	-	30	
32	41,2	-	-	35,7	-	-	31,4*	-	-	31,2*	-	-	29,2*	-	-	-	-	32	
34	40,3	-	-	34,7	-	-	30,5	-	-	29,2*	-	-	27,9*	-	-	-	-	34	
36	39,3	33,2	-	34,0	-	-	29,7	-	-	28,0*	-	-	26,5*	-	-	-	-	36	
38	-	31,3	-	33,3	30,0	-	28,8	-	-	26,7*	-	-	25,2*	-	-	-	-	38	
40	-	29,7	-	32,7	28,6	-	28,3	-	-	25,8	-	-	24,2*	-	-	-	-	40	
42	-	28,2	-	32,1	27,1	-	27,8	25,2	-	25,2	-	-	23,1*	-	-	-	-	42	
44	-	27,0	-	-	25,9	-	27,3	24,3	-	24,8	22,6	-	22,1*	-	-	-	-	44	
46	-	25,8	21,8	-	24,7	-	26,8	23,4	-	24,4	22,1	-	21,2	19,3	-	-	-	46	
48	-	-	20,7	-	23,8	-	26,4	22,6	-	24,0	21,6	-	20,8	18,9	-	-	-	48	
50	-	-	19,7	-	22,9	18,8	-	21,8	-	23,6	21,0	-	20,5	18,5	-	-	-	50	
54	-	-	-	-	17,1	-	20,2	16,5	-	23,0	19,9	-	19,9	17,6	-	-	-	54	
58	-	-	-	-	15,9	-	18,4	15,0	-	18,7	15,6	-	19,4	16,9	-	-	-	58	
62	-	-	-	-	-	-	-	13,8	-	17,4	14,2	-	-	16,2	13,6	-	-	62	
66	-	-	-	-	-	-	-	-	-	-	13,2	-	-	15,4	12,4	-	-	66	
70	-	-	-	-	-	-	-	-	-	-	12,2	-	-	14,2	11,3	-	-	70	
74	-	-	-	-	-	-	-	-	-	-	-	-	-	-	10,3	-	-	74	
78	-	-	-	-	-	-	-	-	-	-	-	-	-	-	-	-	-	78	

m	60 m			66 m			72 m			78 m			84 m			90 m			m
	t	t	t	t	t	t	t	t	t	t	t	t	t	t	t	t	t	t	
30	27,5*	-	-	-	-	-	-	-	-	-	-	-	-	-	-	-	-	-	30
32	26,7*	-	-	23,0*	-	-	-	-	-	-	-	-	-	-	-	-	-	-	32
34	25,8*	-	-	22,4*	-	-	19,3*	-	-	-	-	-	-	-	-	-	-	-	34
36	24,9*	-	-	21,7*	-	-	18,9*	-	-	15,9*	-	-	-	-	-	-	-	-	36
38	24,1*	-	-	21,0*	-	-	18,5*	-	-	15,7*	-	-	12,9*	-	-	-	-	-	38
40	23,2*	-	-	20,3*	-	-	18,1*	-	-	15,5*	-	-	12,8*	-	-	10,2*	-	-	40
42	22,3*	-	-	19,6*	-	-	17,6*	-	-	15,3*	-	-	12,6*	-	-	10,1*	-	-	42
44	21,4*	-</																	



EQUIPMENT PROFILE

1200 tonne

LTM11200-9.1 ALL TERRAIN CRANE

The LTM11200-9.1 with its 1200t capacity is the strongest telescopic crane in the market and with its 100m boom it also has the longest telescopic boom in the world. Unparalleled capacity increases are realised with the installation of the Y-Guy support system. Short erection times, multiple configurations, extreme maneuverability and many safety innovations make this a truly unique and unrivaled crane.

Asset benefits

- + All axle steering
- + Economical transportation
- + All counterweight assembled at ground level
- + Operators cabin lowers to ground level for ease of access
- + Varied boom configurations to give optimum solutions for height, radius and weight

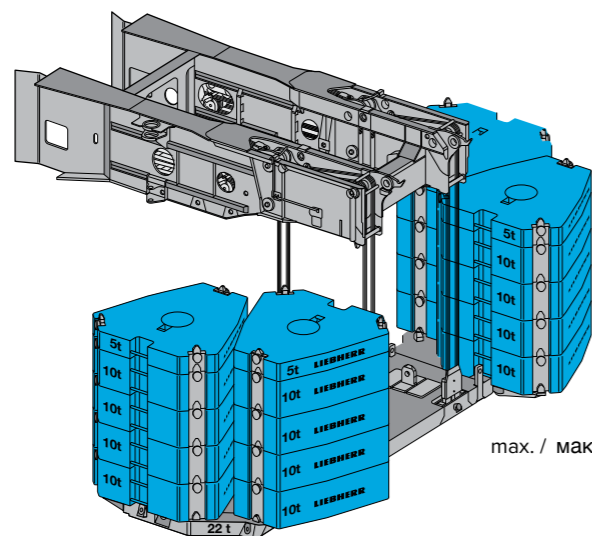
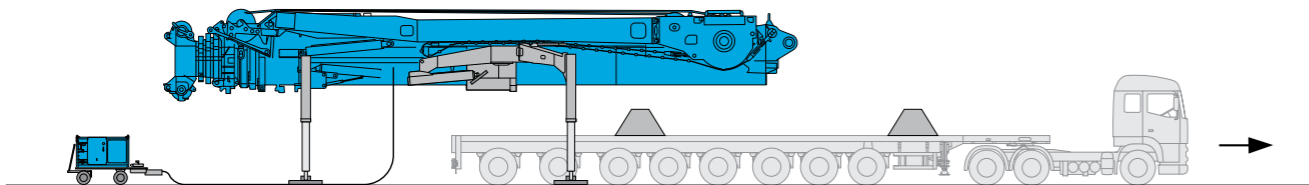
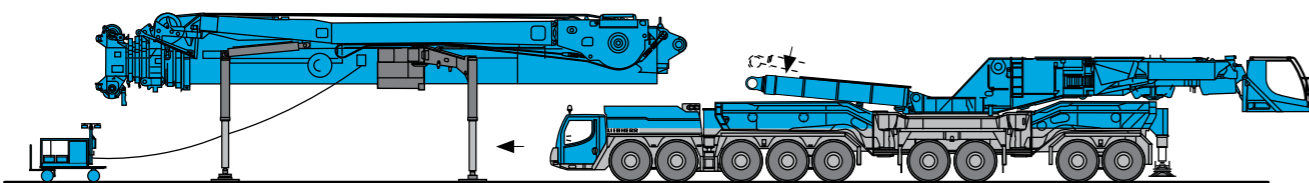
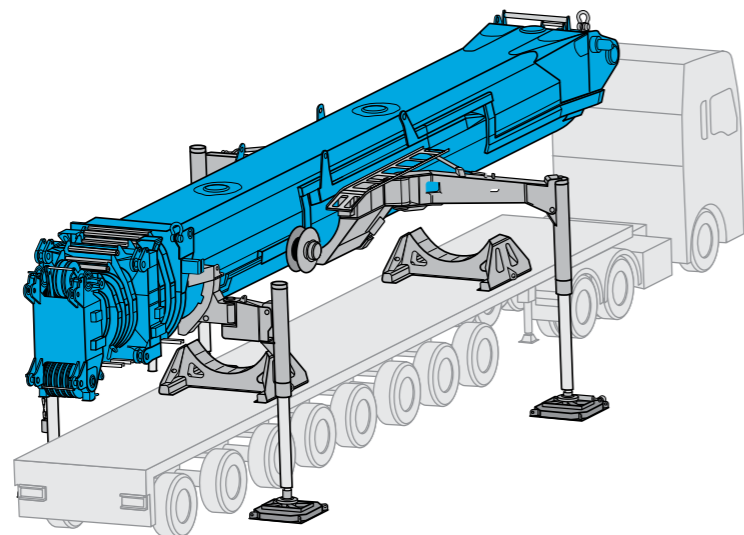
Quick stats

Long reach boom	100 m
Heavy lift boom	55 m
Maximum hook height	188 m
Maximum radius	136 m
Luffing fly jib	125 m

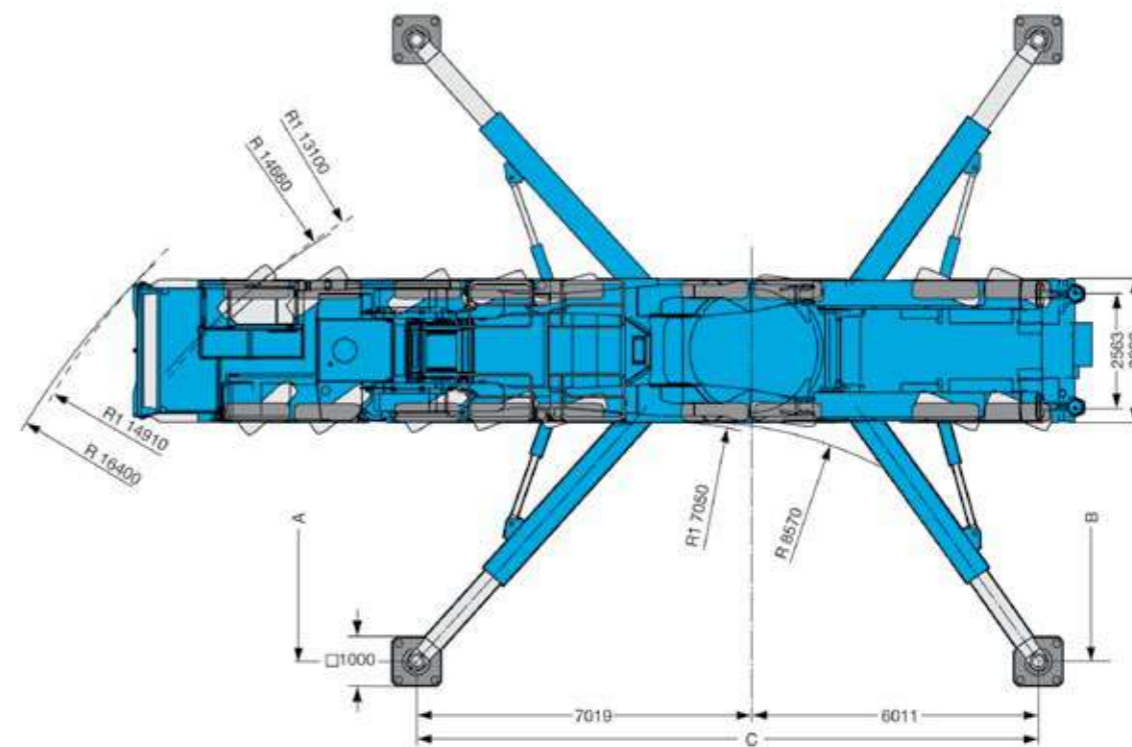
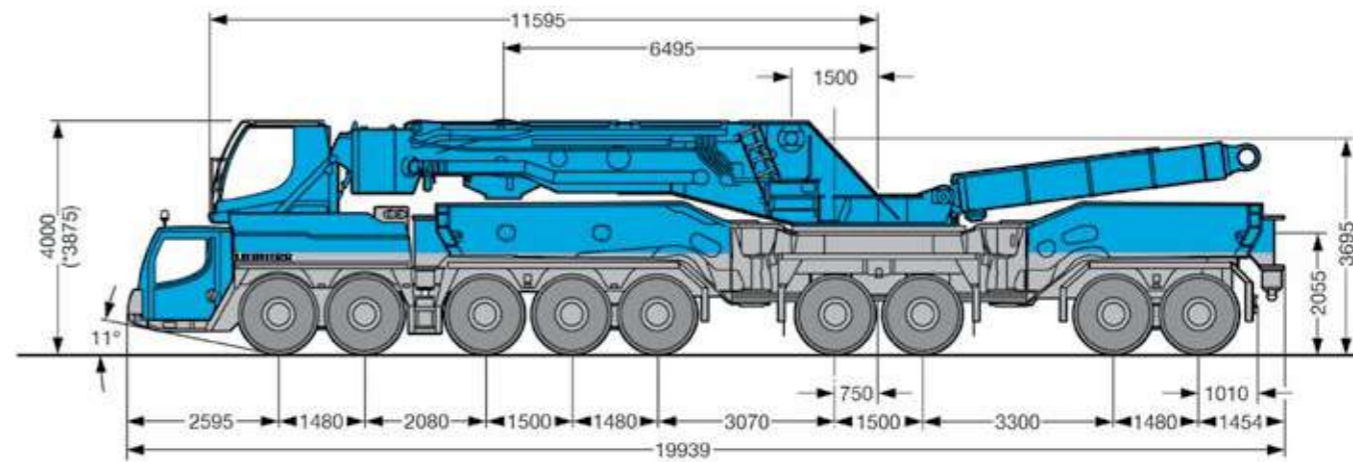


1200 tonne

LTM11200-9.1 ALL TERRAIN CRANE

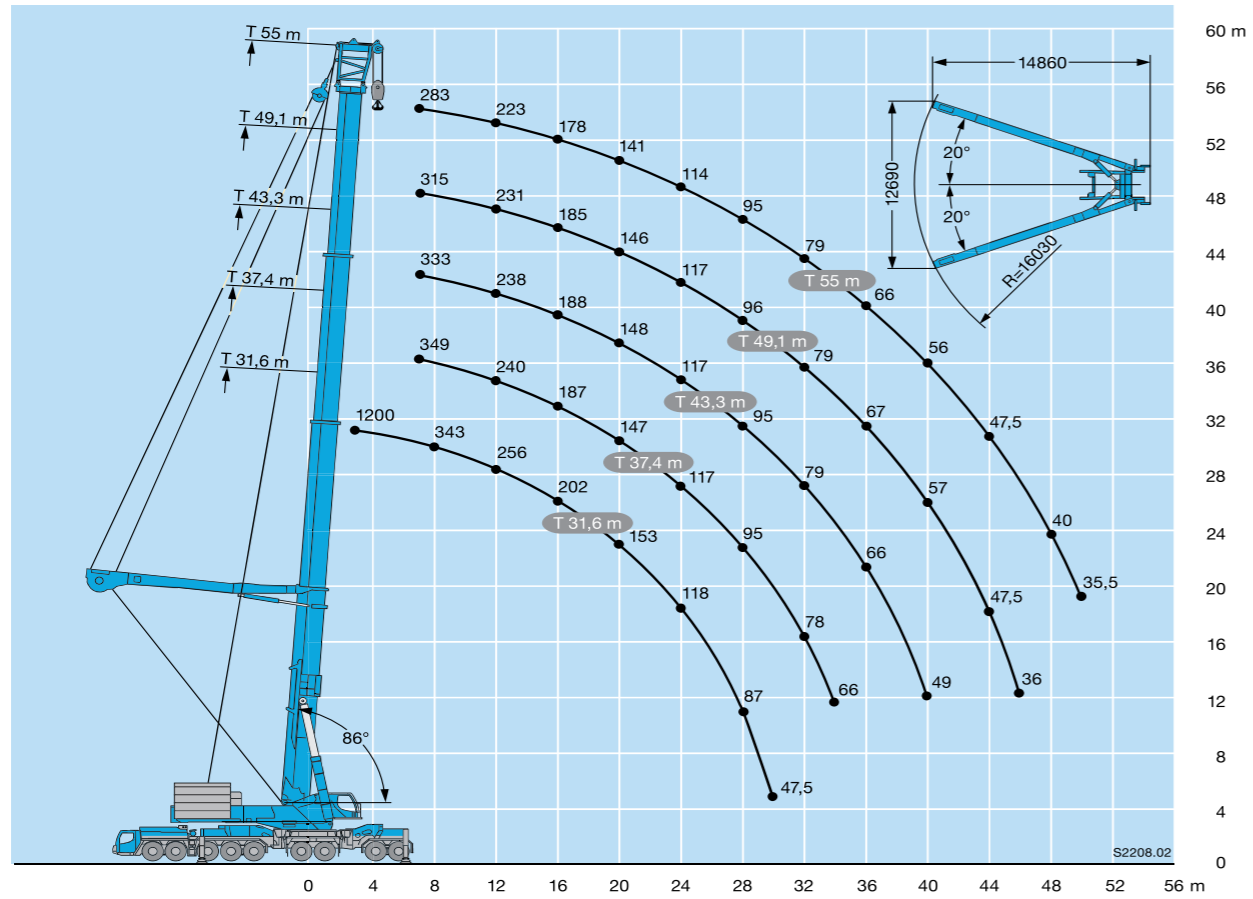


max. / макс. 202 t



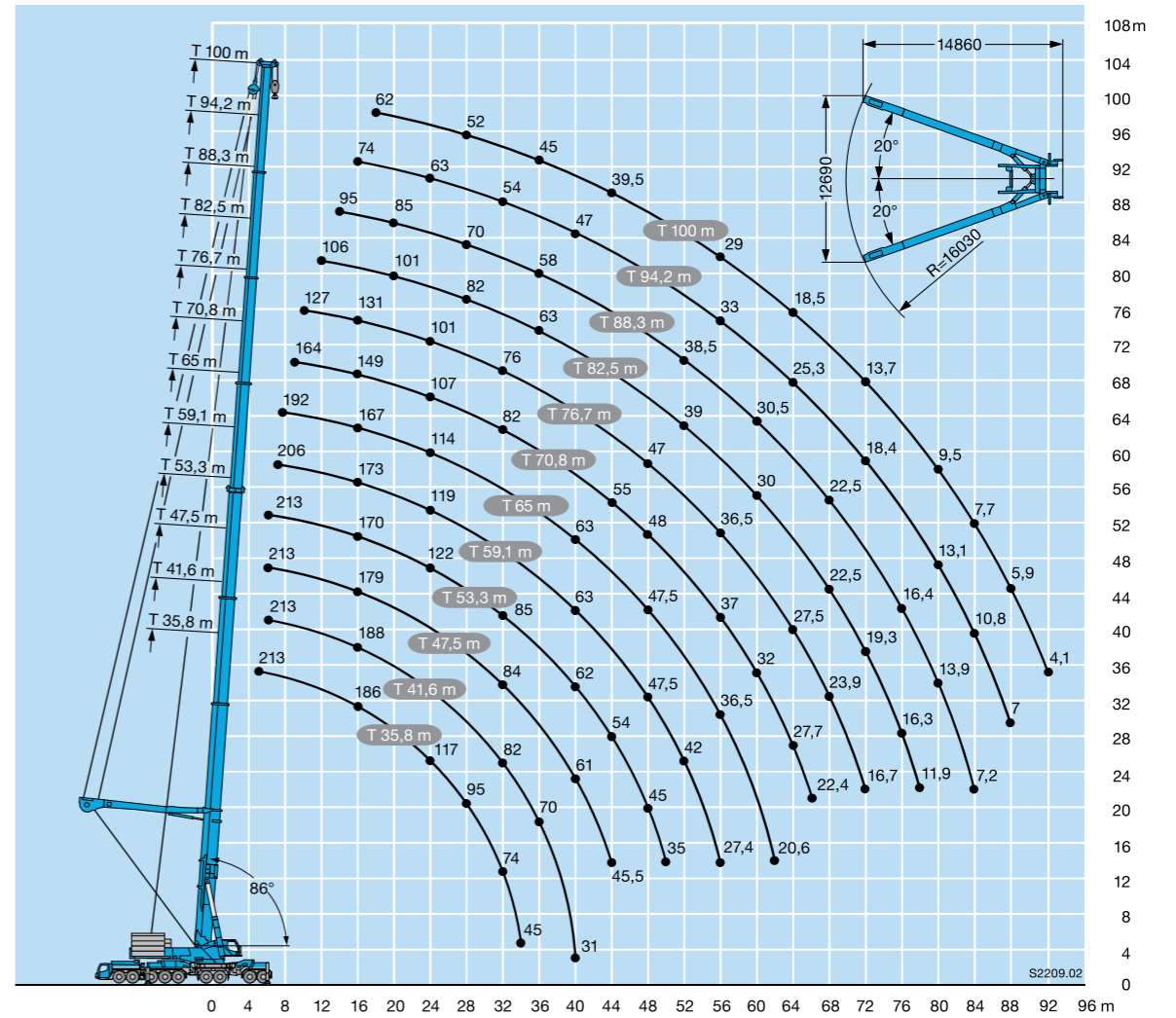
Lifting heights

T3Y



Lifting heights

T7Y



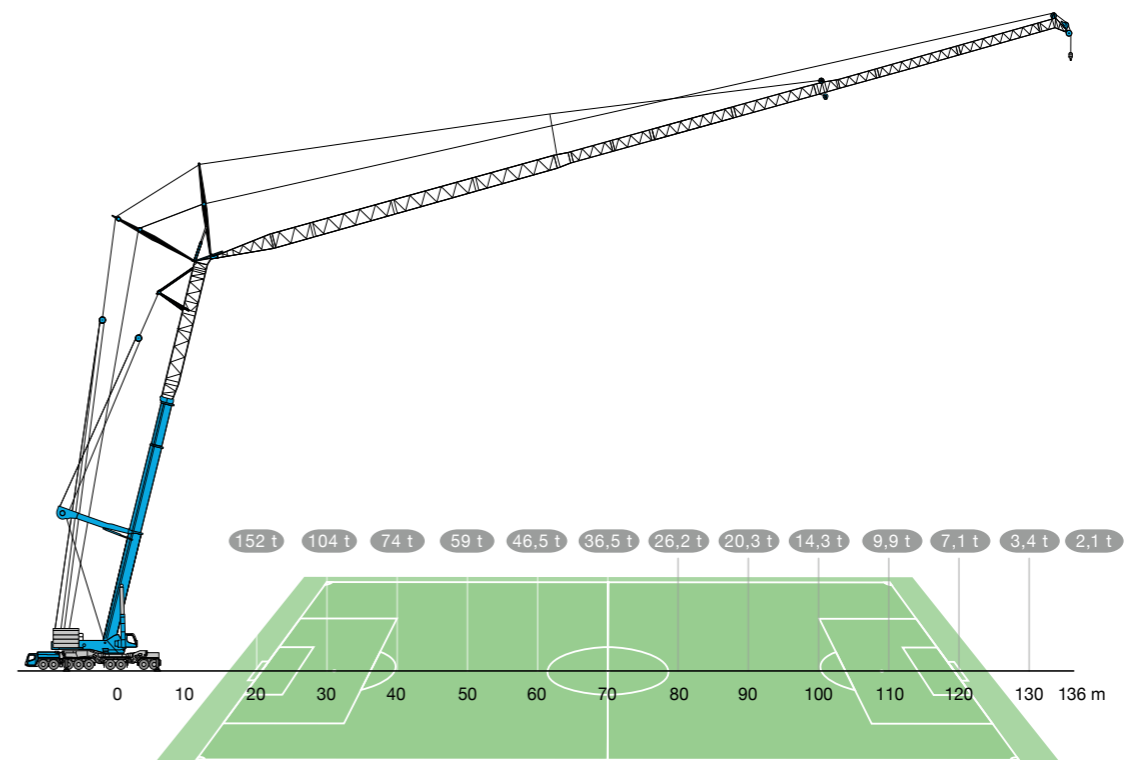
Lifting capacities

T3Y

m	EN						m
	31,6 m*	37,4 m*	43,3 m*	49,1 m*	55 m*		
2,5	1200						2,5
3	1000						3
3,5	900						3,5
4	830						4
4,5	700						4,5
5	580						5
6	360						6
7	354	354	349	333	315	283	7
8	343	326	323	313	301	270	8
9	317	299	299	290	280	258	9
10	294	277	278	271	262	246	10
12	256	239	240	238	231	223	12
14	226	210	211	211	206	199	14
16	202	186	187	188	185	178	16
18	176	165	167	168	164	158	18
20	153	145	147	148	146	141	20
22	134	128	131	131	131	127	22
24	118	114	117	117	117	114	24
26	105	102	105	105	106	104	26
28	87	90	95	95	96	95	28
30	47,5	51	86	87	87	86	30
32			78	79	79	79	32
34			66	72	73	72	34
36				66	67	66	36
38				61	61	61	38
40				49	57	56	40
42					52	52	42
44					47,5	47,5	44
46					36	43,5	46
48						40	48
50						35,5	50

* Telescopic boom incl. 2.2 m T3-adapter + 0.5 m T3-head
 ** Load capacities over 363.2 t only with heavy-lift boom and additional equipment at the rear

TAB 1780881

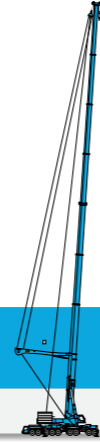




Optimized for the maintenance of wind power generators

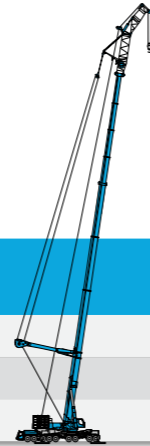
100 m-telescopic boom + Y-guying system

Height of hub of wind power generator	Max. capacity at radius	Hook height	System
80 m	84 t x 16 m	92 m	T7Y



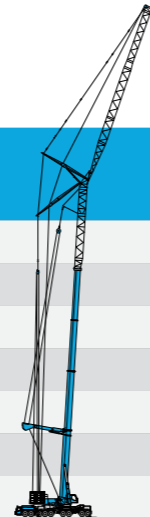
100 m-telescopic boom + Y-guying system + fixed jib

Height of hub of wind power generator	Max. capacity at radius	Hook height	System
80 m	94 t x 20 m	89 m	T7YVENZF
100 m	76 t x 16 m	107 m	T7YVEV2NZF
105 m	65 t x 16 m	114 m	T7YVEV3V2NZF



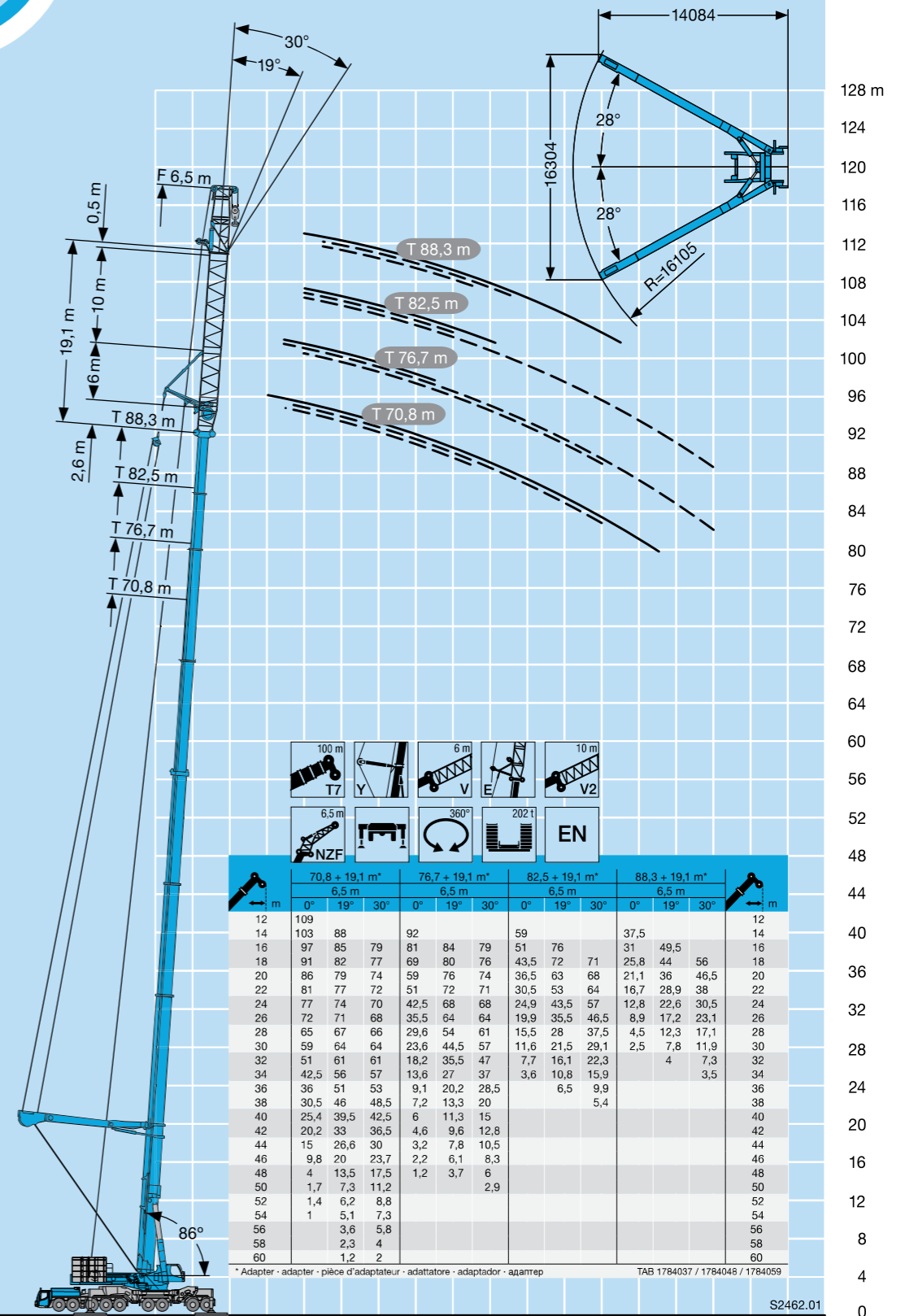
52 m-telescopic boom + Y-guying system + luffing jib

Height of hub of wind power generator	Max. capacity at radius	Hook height	System
80 m	141 t x 18 m	90 m	T3YVEN
100 m	97 t x 22 m	112 m	T3YV2VEN
105 m	83 t x 24 m	117 m	T3YV2VEN
120 m	58 t x 32 m	128 m	T3YV2VEN
130 m	38 t x 36 m	138 m	T3YV2VEN
140 m	26.1 t x 44 m	148 m	T3YV2VEN
150 m	15.8 t x 50 m	158 m	T3YV2VEN



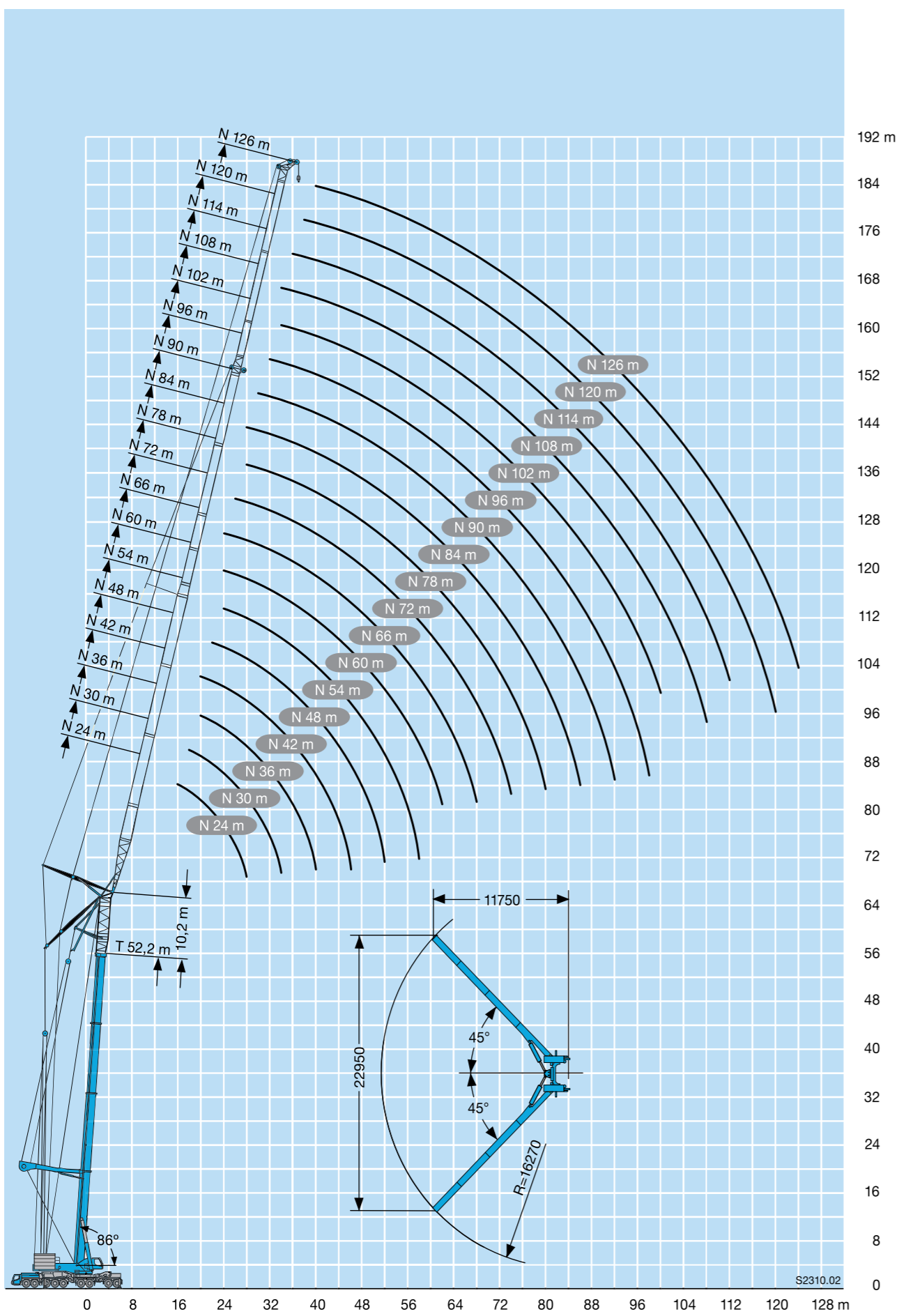
Lifting heights

T7YVEV2NZF 6.5 m



Lifting heights

T3YVEN



Lifting capacities

T3YVEN

m	52,2 m + 10,2 m*												m												
	24 m ¹⁾			30 m ¹⁾			36 m ¹⁾			42 m ¹⁾				48 m			54 m			60 m			66 m		
	86°	76°	66°	86°	76°	66°	86°	76°	66°	86°	76°	66°	86°	76°	66°	86°	76°	66°	86°	76°	66°	86°	76°	66°	
16	156																								16
18	146																								18
20	137																								20
22	129																								22
24	121																								24
26	111																								26
28	102																								28
30																									30
32		70																							32
34		66																							34
36		62																							36
38		58																							38
40																									40
42																									42
44																									44
46																									46
48																									48
50																									50
52																									52
54																									54
56																									56
58																									58
60																									60
62																									62
64																									64
66																									66
68																									68
70																									70
72																									72
74																									74
76																									76
78																									78
80																									80
82																									82
84																									84
86																									86

* Adapter - adapter - pièce d'adaptateur - adattatore - adaptador - адаптер TAB 1783824 / 1783837 / 1783850 1)TAB 1783826 / 1783839 / 1783852 2)TAB 1783828 / 1783841 / 1783854

Lifting capacities

T3YVEN

m	52,2 m + 10,2 m*												m																
	72 m			78 m			84 m			90 m				96 m			102 m			108 m			114 m			120 m			126 m
	86°	76°	66°	86°	76°	66°	86°	76°	66°	86°	76°	66°	86°	76°	66°	86°	76°	66°	86°	76°	66°	86°	76°	66°	86°	76°	66°		
26	35,5																										26		
28	37,5																										28		
30	39,5																										30		
32	41																										32		
34	42																										34		
36	42																										36		
38	41,5																										38		
40	41																										40		
42	40,5																										42		
44	40																										44		
46	39,5																										46		
48	39																										48		
50	38,5	30,5																									50		
52	38	30,5																									52		
54	37,5	30																									54		
56	37	29,7																									56		
58	36,5	29,3																									58		
60	36,5	29																									60		
62	36	28,6																									62		
64	35,5	28,3																									64		
66	35,5	27,9																									66		
68	35	27,2																									68		
70	34,5	26,1	8,9																								70		
72	33	24,6	9,5																								72		
74	31,5	22,8	9,9																								74		
76		21	10,1																								76		
78		19,3	9,6																								78		
80		17,8	9,1																								80		
82		16,3	8,3																								82		
84		13,4	7,6																								84		
86			6,4																								86		
88			5,1																								88		
90			3,6																								90		
92			1,8																								92		
94																											94		
96																											96		
98																											98		
100																											100		
104																											104		
108																											108		
112																											112		
116																											116		
120																											120		
124																											124		

* Adapter TAB 1783824 / 1783837 / 1783850



EQUIPMENT PROFILE

Heavy transport

From within our extensive and ever-expanding fleet of specialist transport equipment we can offer the complete transport solution for any project. We can provide everything from a simple prime mover and flatbed trailer up to our modular 8-axle platform trailer for even the most extreme jobs. Our specialists liaise with relevant national and local authorities to ensure all permits, permissions, escorts and traffic management plans are in place to ensure a safe and efficient journey.

41

Asset benefits

- + Flatbeds – standard and extendable
- + Drop decks – standard, extendable, widening and with/without ramps
- + All combinations – standard, B-Double, Double and Triple road trains
- + 40t capacity 16.5m - 45m Quad axle extendable with fully electronic/hydraulic steering for maximum maneuverability
- + Fleet of prime movers to suit all applications
- + 4X8 widening floats in standard non-steering or with all axles full steering up to 45° where ultimate maneuverability is required
- + 8X8 all axle steering modular platform trailer with fully automatic electronic steering – with/without dolly
- + On both the 4X8 and 8X8 modular trailers the steering can be controlled and turned in any direction at any time by 2nd operator to gain access to even the most challenging site – it can even go sideways!





HEAD OFFICE / HEAVY LIFT

PORT AUGUSTA

Lot 6, Main North Road Port Augusta
South Australia 5700 / PO Box 2086
P: 08 8641 3955 (24/7)
F: 08 8641 3977
E: admin@maxcranes.com.au
ABN 18 100 274 520

ADELAIDE DEPOT

22 Cavan Road Dry Creek
South Australia 5094
P: 08 8641 3955
F: 08 8641 3977

WHYALLA DEPOT

Lot 132, Mulconray Road Whyalla
South Australia 5600
P: 08 8641 3955
F: 08 8641 3977

PORT PIRIE DEPOT

Lot 371 Warner Town Road
Port Pirie South Australia 5540
P: 08 8641 3955
M: 0438 259 124

MOOMBA DEPOT

Lot 5A, Browns Road Moomba
South Australia 5710
P: 08 8641 3955
F: 08 8641 3977
E: supervisor2@maxcranes.com.au

www.maxcranes.com.au

Industry certifications



Industry memberships



2019 CICA Lift of the year

